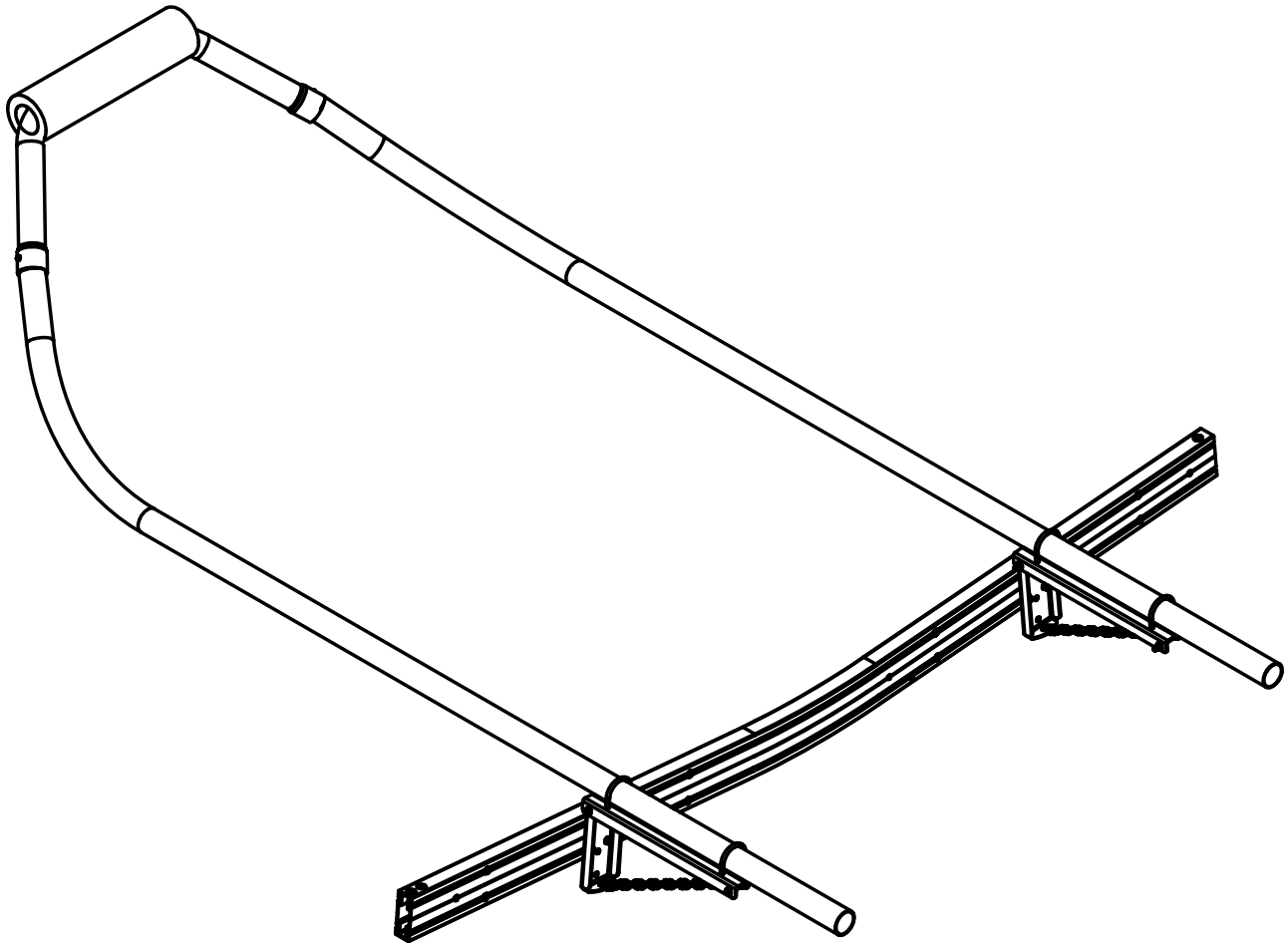
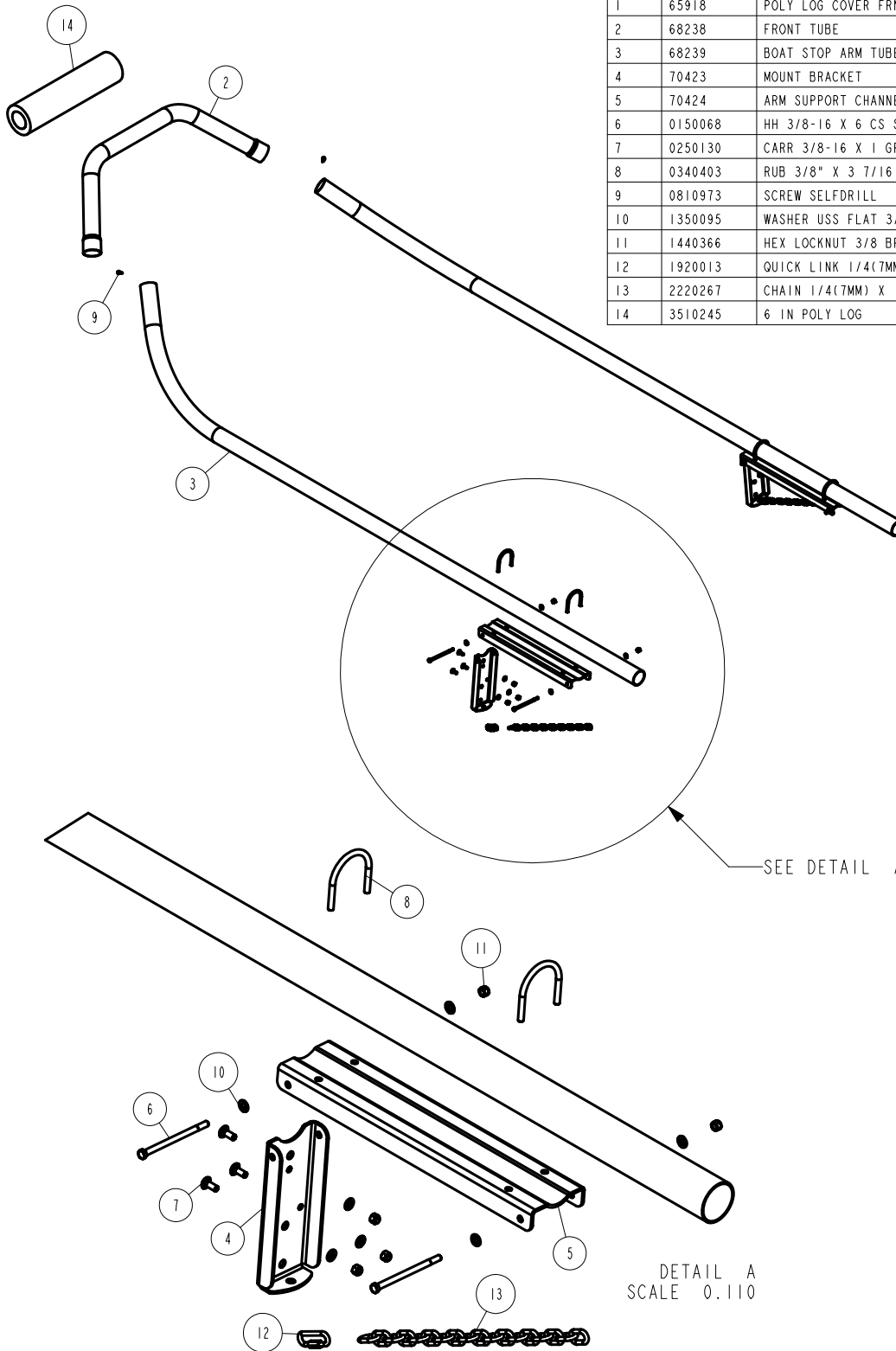
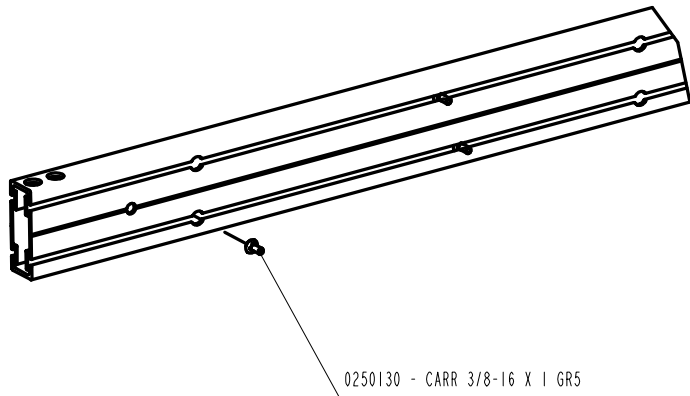


**HA0098
FRONT END BOAT STOP ALUMINUM V-FRAME 3000-6000****Bundles Required**

68240	Boat Stop Front Tube Assy.
68241	Boat Stop Side Tube Bundle
70224	Boat Stop Front Hdwe Bundle

ITEM	PART #	DESCRIPTION	QTY	NOTE
1	65918	POLY LOG COVER FRNTEND STOP BLUE	1	
2	68238	FRONT TUBE	1	
3	68239	BOAT STOP ARM TUBE	2	
4	70423	MOUNT BRACKET	2	
5	70424	ARM SUPPORT CHANNEL	2	
6	0150068	HH 3/8-16 X 6 CS STAINLESS	4	
7	0250130	CARR 3/8-16 X 1 GR5	6	
8	0340403	RUB 3/8" X 3 7/16 X 3 1/2 SS	4	
9	0810973	SCREW SELFDRIILL 1/4-14X3/4 SS	2	
10	1350095	WASHER USS FLAT 3/8 STAINLESS	22	
11	1440366	HEX LOCKNUT 3/8 BRASS/NYLON INSERT	18	
12	1920013	QUICK LINK 1/4(7MM) PLATED	2	
13	2220267	CHAIN 1/4(7MM) X 18 LINKS PC	2	
14	3510245	6 IN POLY LOG	1	

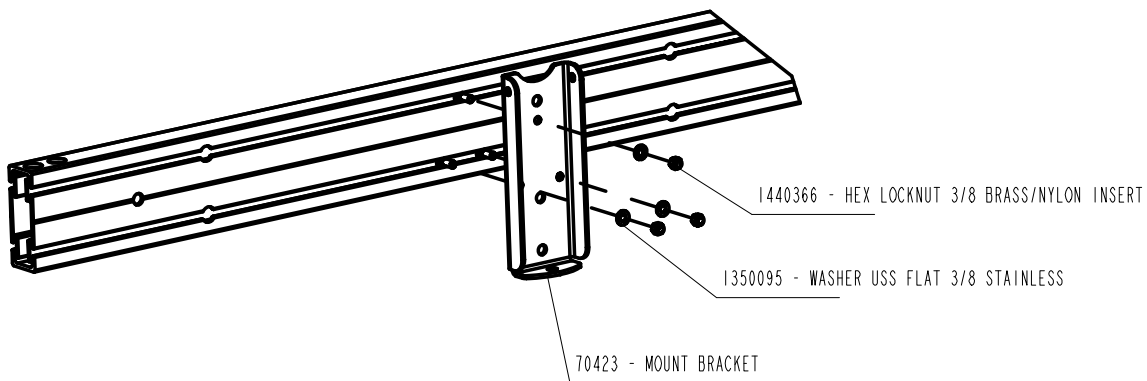




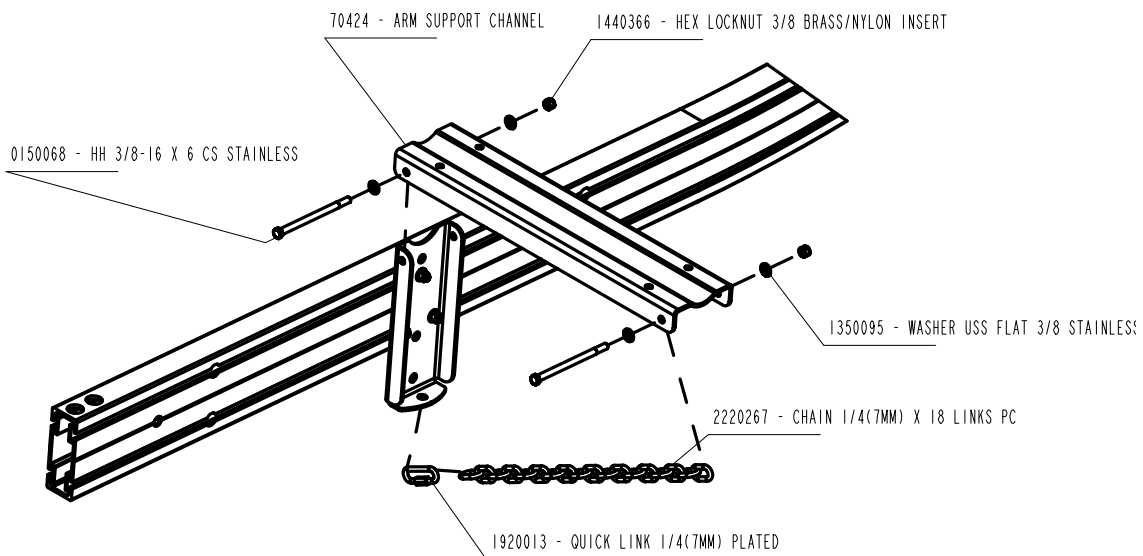
Insert mounting bolts into the slots on the inside of the platform v-frame and slide toward the desired location. One in the top and two in the bottom and slide them toward the center.

As you begin assemble align the holes in the bracket with the bolts inserted in the slots

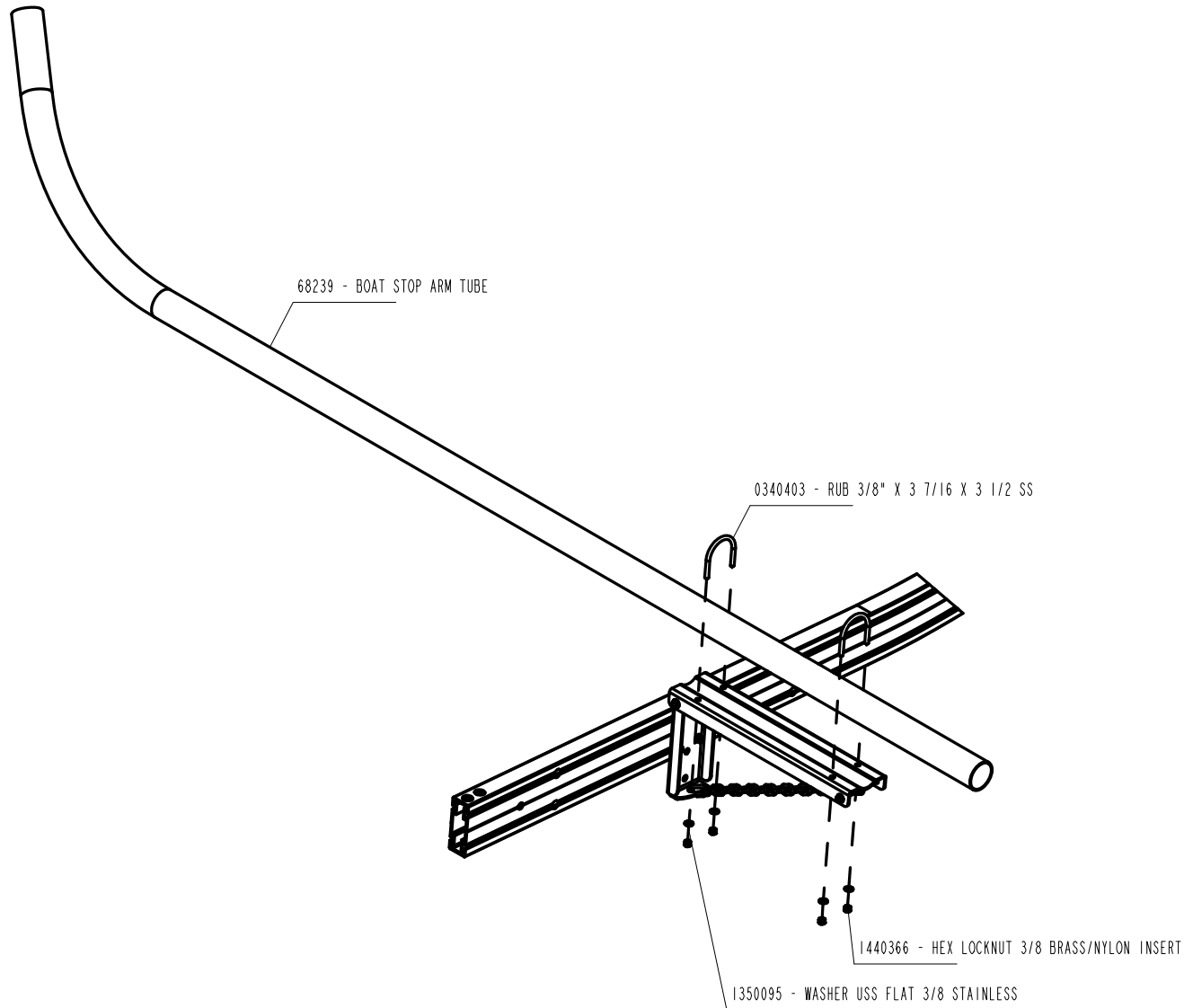
and secure with flat washers and locknuts with nylon inserts, repeat this process on the other side.



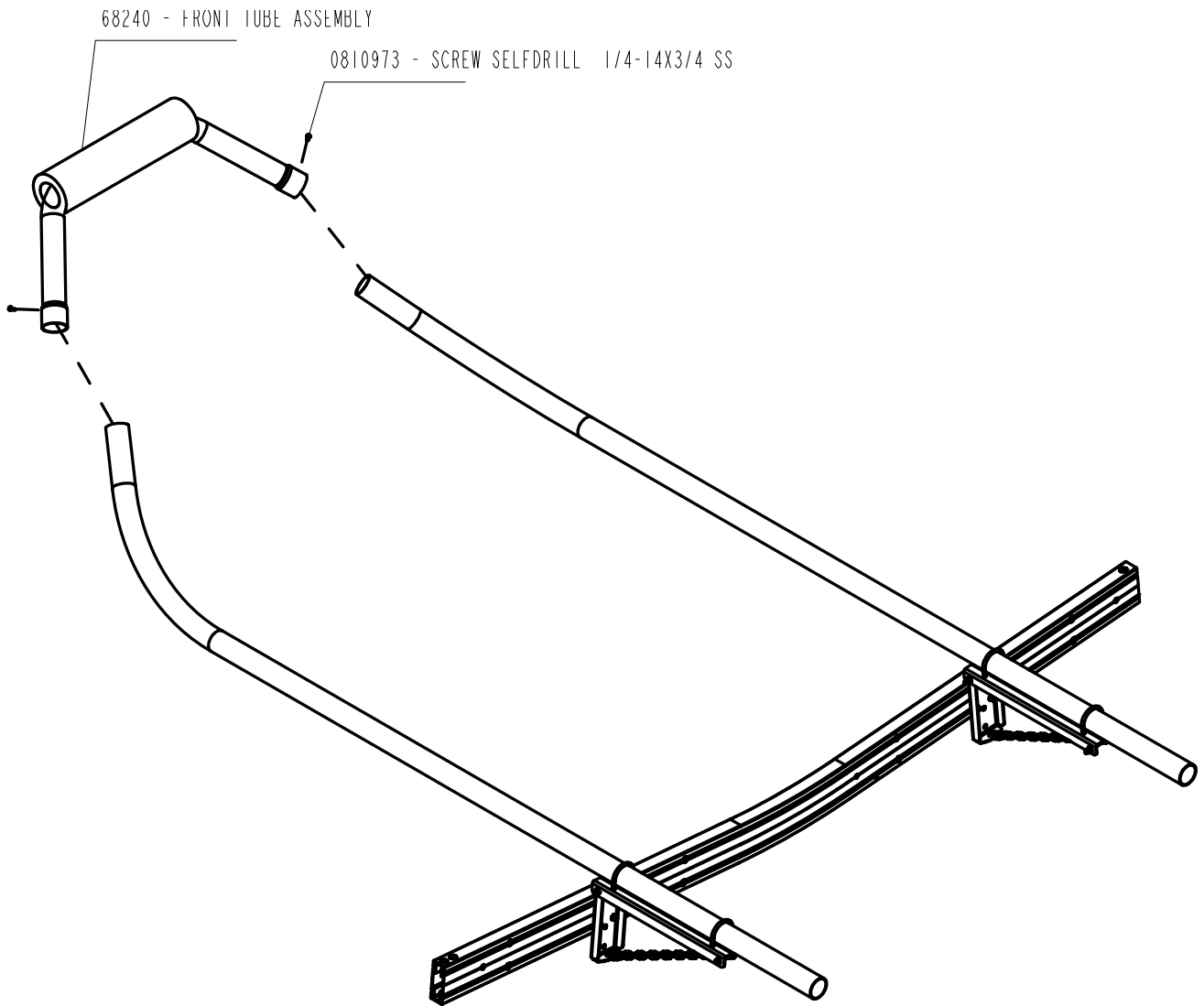
Secure the quick link to the mounting bracket and insert end chain link, secure the arm support channel to the mounting brackets, insert a bolt



thru a flat washer align the holes on the arm support channel with the holes in the mounting bracket and slide the bolt from the outside in. It will be secured with flat washer and locknut with nylon insert. Repeat the process sliding the bolt thru the channel and a chain link that will make the channel somewhat level. It will be necessary to repeat these steps on the other side. Slide the mounting bracket assemblies approximately 64" apart and center on the platform.



Mount the stop arm tube as shown using the hardware included with the kit. Repeat this process on the other side.



It will be necessary to load the boat on the platform and make the necessary adjustments before finishing the assembly to properly fit it to the boat. Adjust the chain links to ensure that the front tube assembly is just above the bow eye. Make sure all mounting components are in place and center the assembly before tightening the hardware securely.