



PRODUCT ASSEMBLY INSTRUCTIONS:

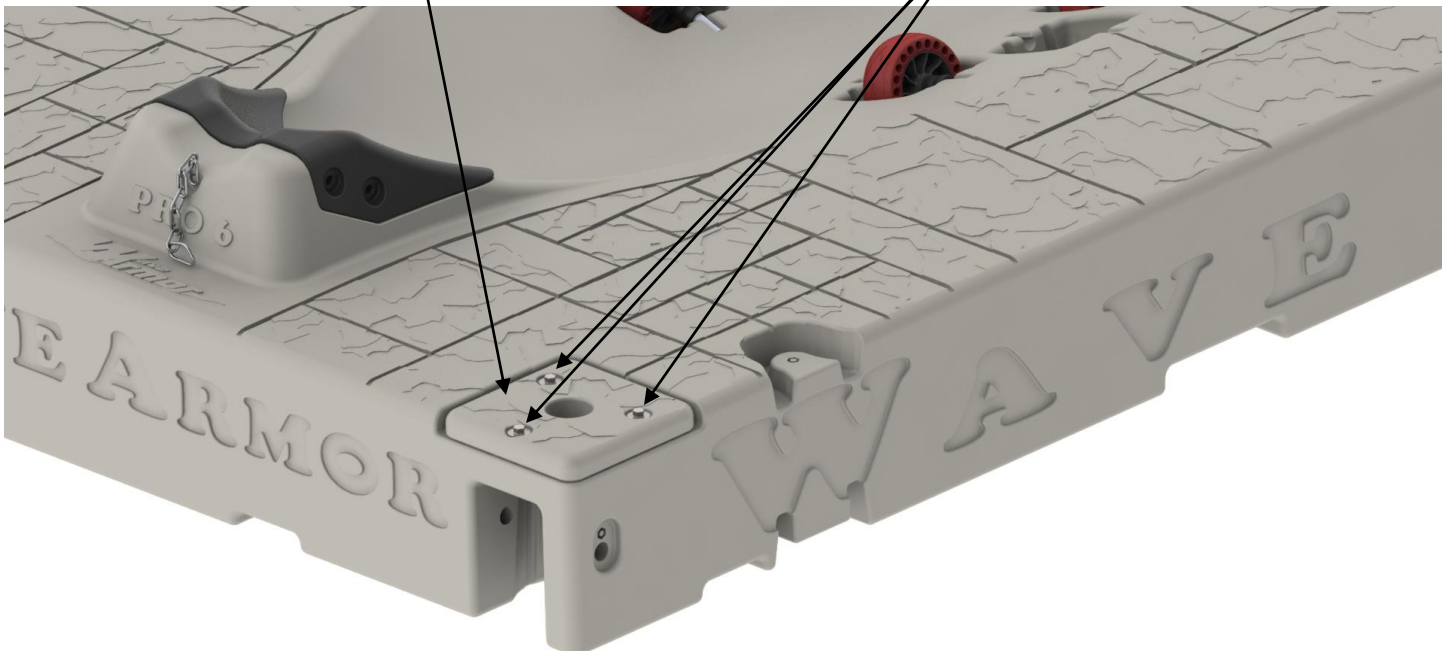
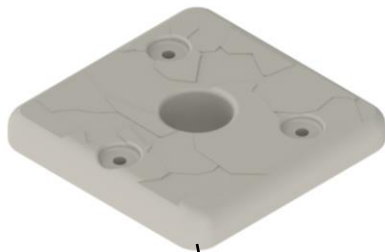
wavearmor.com

Item # | Product Name: #302152 Pro 5 & 6, 3" Post Sleeve Kit

Parts List:	Tools Needed:
1. 3" Post Sleeve Qty 2	1. Ratchet and 9/16" socket
2. Hardware Bag containing: 3/8 x 2" bolt qty 6, lock washer qty 6, heavy washer qty 6	2.
3.	3.
4.	4.
5.	5.
6.	6.

Assembly Instructions:

1. The 3 inch post sleeve is designed to fit 3 inch pipe which has an OD of 3 1/2". Insert post sleeve into the port as shown below. Make sure the 3 bolt holes line up with the threaded inserts in the port. Insert the 3/8 x 2" bolts into the holes and thread into the inserts in the port. Tighten securely. Repeat on other side.





Finished unit.