



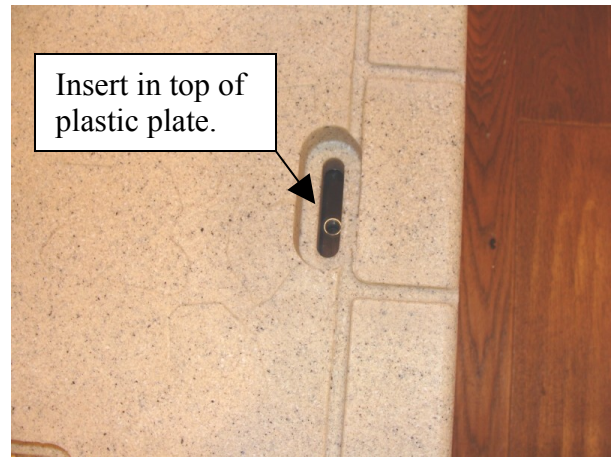
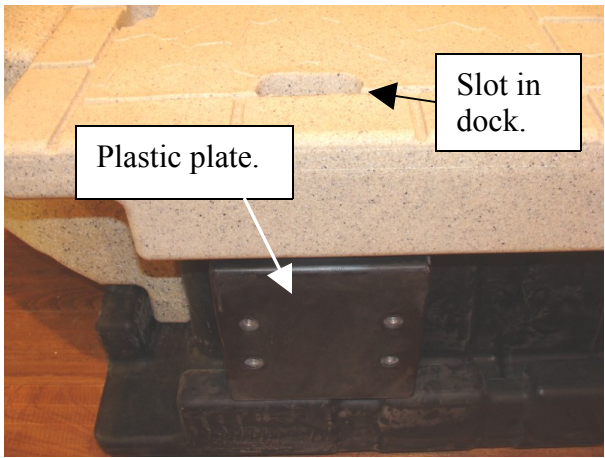
Dock Accessory Attachment Plate Item #300482

1. Slide accessory plate into the channel on the dock. Make sure the insert is on the top.



Plastic plate slid into channel on Wave Armor Dock.

2. Slide plastic plate to desired position. Be sure to line up insert with slot in top of dock.



3. Secure plate in position with 3/8 x 1 1/2" bolt and washer. Accessories may be then bolted onto the plastic plate.

