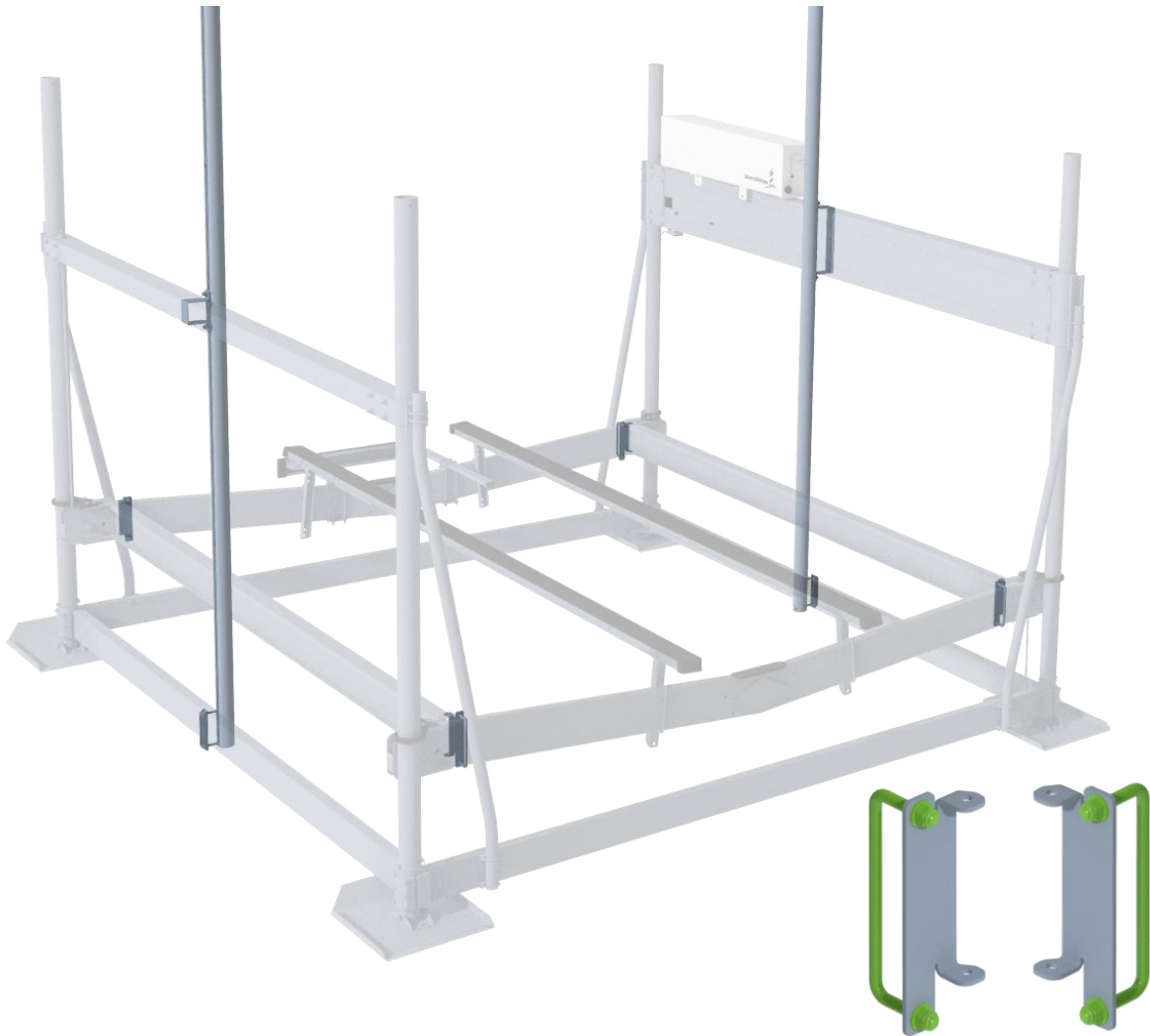


## HA0284 Interior Post Guides 10K – Steel Cradle



### **Application**

HA0284 fits 10,000 lb. ShoreStation freestanding boat lifts with a steel platform. The Interior GlidePoles are designed to provide additional boat protection when entering the lift. They are mounted between the corner posts of the lift and may be adjusted to the best location for maximum boat protection. Interior GlidePoles can be used in conjunction with several other styles of GlidePole Load Guides that are mounted on the ends of the lift to create total front-to-back guidance assistance that centers the boat and prevents damage. **Installing these Interior Post Guides will reduce the maximum boat width by 7 inches.**

### **Tools**

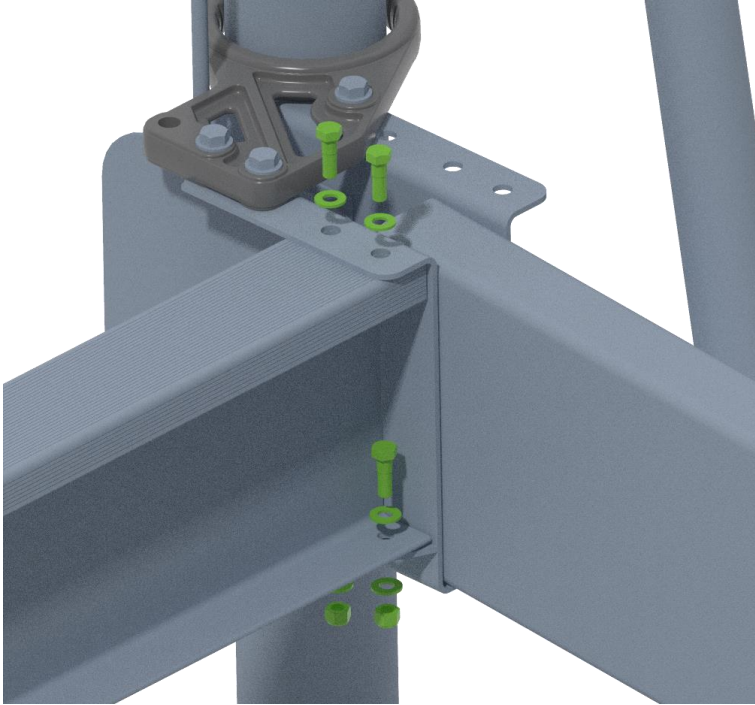
3/4 socket and wrench, 1/2 socket and wrench, cordless drill

### **Organize Parts**

Open the hardware box and bag, and sort the hardware and other contents by size.

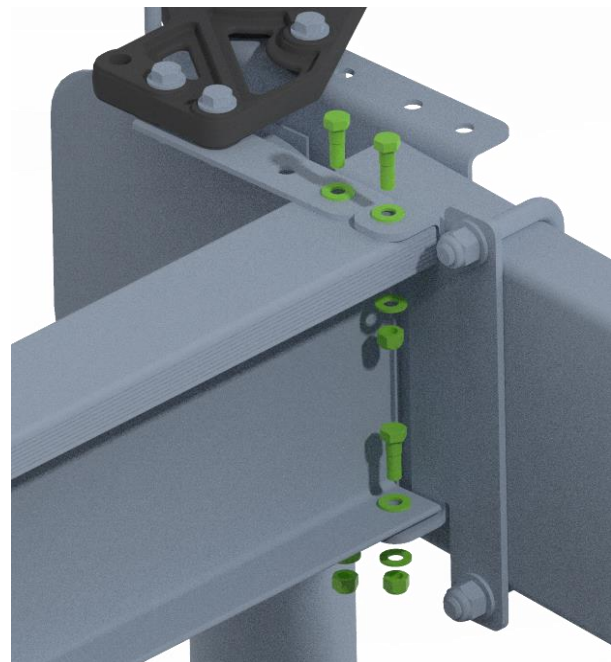
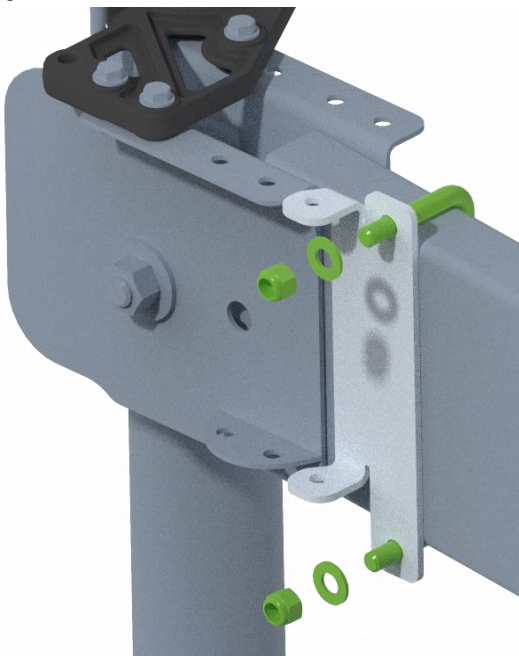
## **1 – Remove I-beam Hardware**

Remove the hardware connecting the I-beam to the platform in all 4 corners.



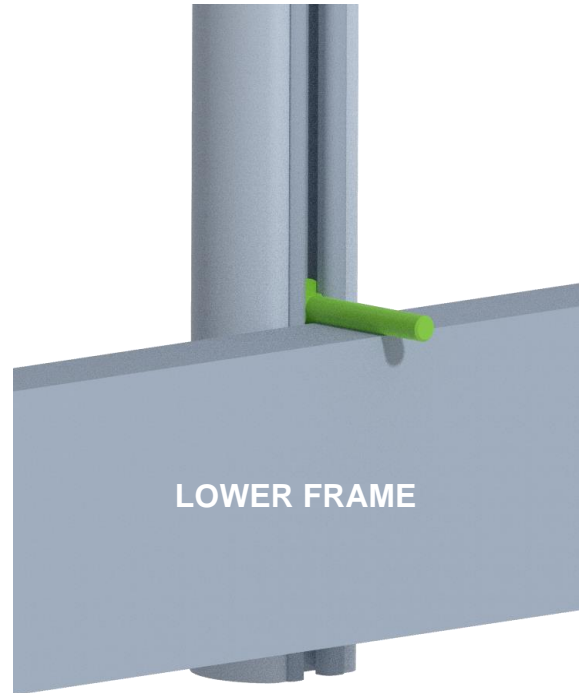
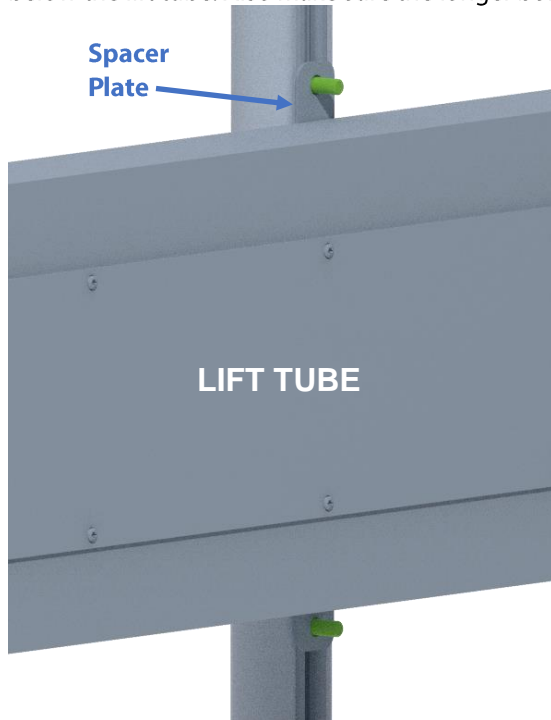
## **2 – Attach Bracket & Reconnect I-beam**

Put the U-bolt around the cradle tube and through the bracket as shown below. There are right and left brackets so make sure to use the correct one. Add washers and locknuts to the U-bolt. Attach the U-bolts and brackets to the other corners of the platform. Set one I-beam into place as shown below and connect it to the platform and bracket with the hardware that was previously removed. Repeat on the other side of the I-beam and then repeat on the other side of the platform. Tighten all hardware.



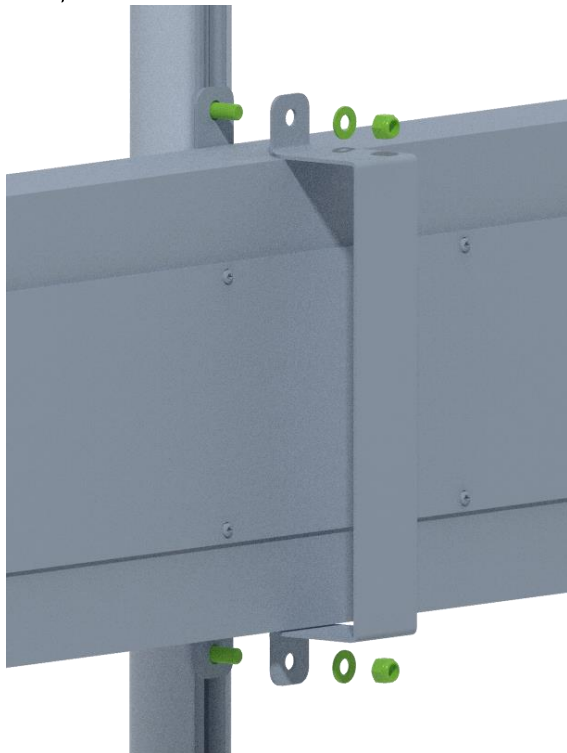
### 3 – Bolts into GlidePole

Slide two 1/2-13 x 1-1/2 bolts and one 1/2-13 x 3-1/2 bolt into the T-slot of a GlidePole. Insert the two shorter bolts through the long spacer plate. Put the GlidePole up against the lift tube with one short bolt above the lift tube and one below the lift tube. Also make sure the longer bolt is above the lower frame.



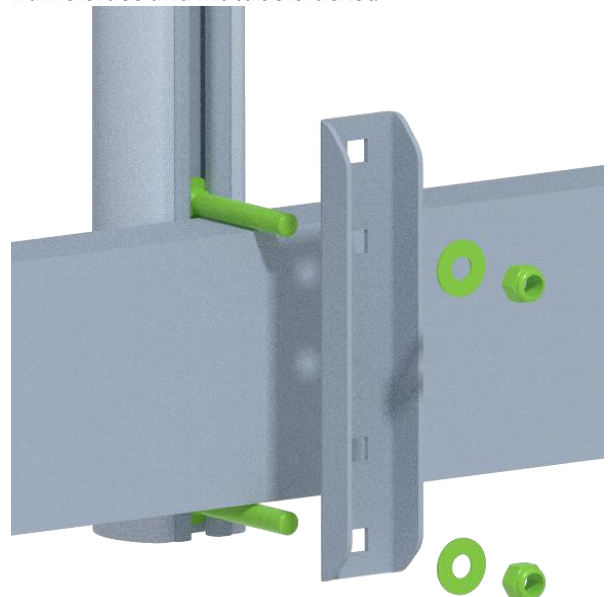
### 4 – Lift Tube Bracket

Put the bracket around the lift tube, the washers on the bolts, and start the lock nuts as shown below.



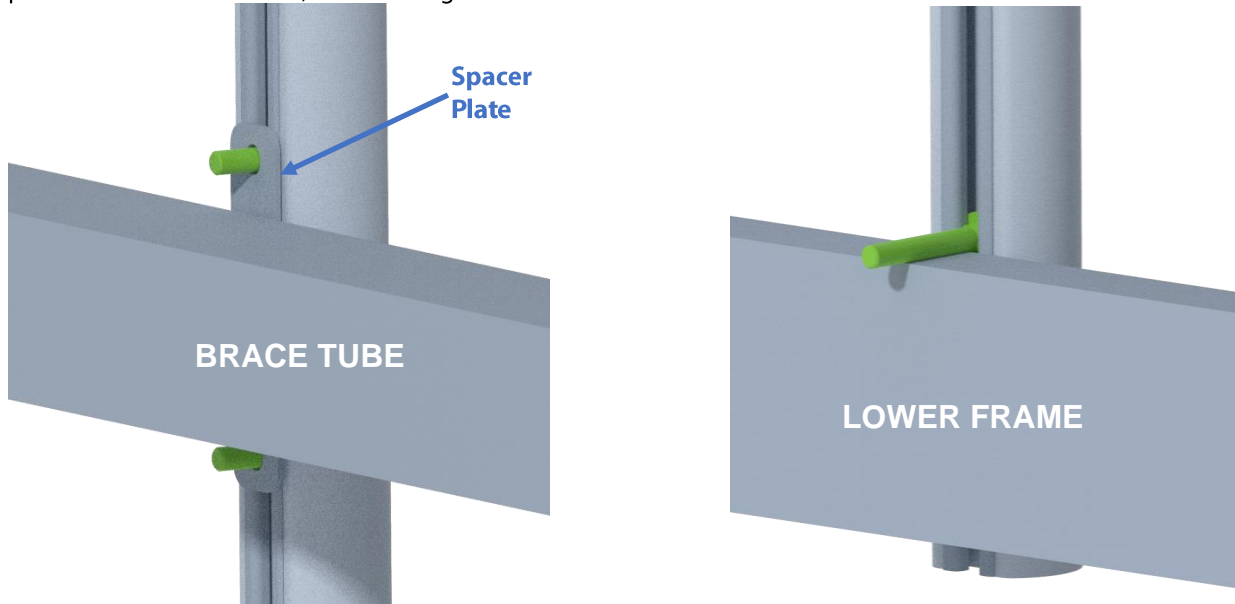
### 5 – Lower Frame Brace

Slide a 1/2-13 x 3-1/2 bolt into the bottom of the GlidePole under the lower frame and put the bolts through the correct holes in the brace. Add the washers and lock nuts to the bolts. Make sure the GlidePole is straight vertical and tighten the lock nuts for the lower frame brace and lift tube bracket.



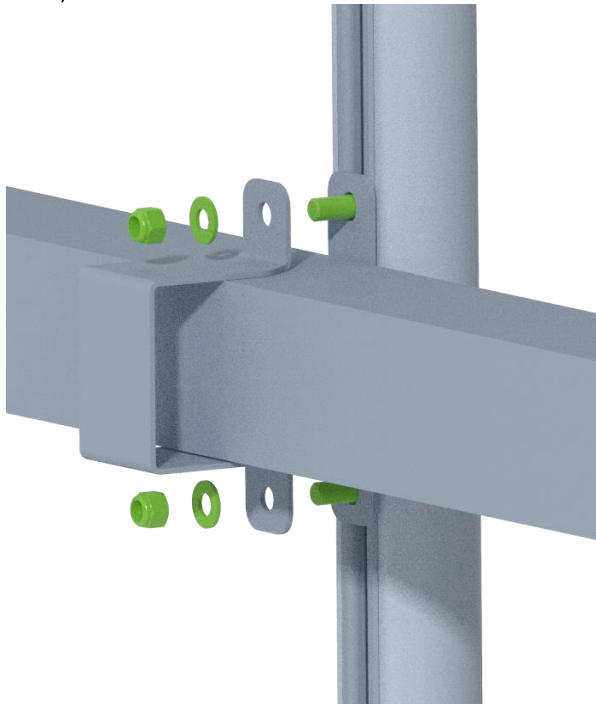
### 6 – Brace Tube

Slide two 1/2-13 x 1-1/2 bolts and one 1/2-13 x 3-1/2 bolt into the T-slot of the other GlidePole. Insert the two shorter bolts through the shorter spacer plate. Put the GlidePole up against the brace tube with one bolt above the brace tube and one below the tube. Make sure the longer bolt is above the lower frame. Put the bracket around the brace tube, place washers on the bolts, and hand tighten the lock nuts as shown.



### 7 – Brace Tube Bracket

Put the bracket around the lift tube, the washers on the bolts, and start the lock nuts as shown below.



### 8 – Lower Frame Brace

Slide a 1/2-13 x 3-1/2 bolt into the bottom of the GlidePole under the lower frame and put the bolts through the correct holes in the brace. Add the washers and lock nuts to the bolts. Make sure the GlidePole is straight vertical and tighten lock nuts for the lower frame brace and brace tube bracket.

