



PRODUCT ASSEMBLY INSTRUCTIONS:



www.wavearmor.net

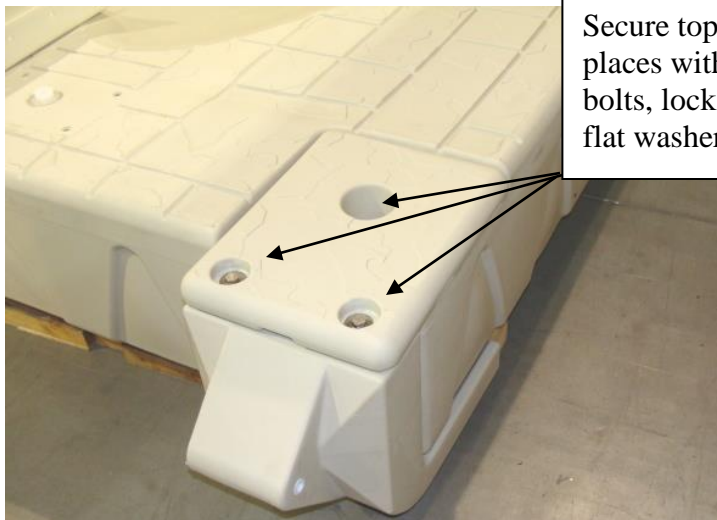
Item # | Product Name: 301915 SLX Port to Wave Armor Dock Attachment Kit

Parts List:	Tools Needed:
1. Plastic Dock Connector, qty 2	1. 3/4" socket and ratchet
2. Plastic SLX Top Connector qty 2, SLX Bottom Connector qty 2	2. 3/4" wrench
3. Hdwe Bag containing 1/2x9 1/2" bolt qty 2, 1/2" washer qty 4, 1/2" jam nut qty 4, 3/8x2" bolt qty 8, 3/8 flat washer qty 8, 3/8 lock washer qty 8	3. 9/16" socket and ratchet and long extension
4.	4.

1. Align bottom connectors with the post holes at the front of the SLX Port. Then slide them into the post holes.

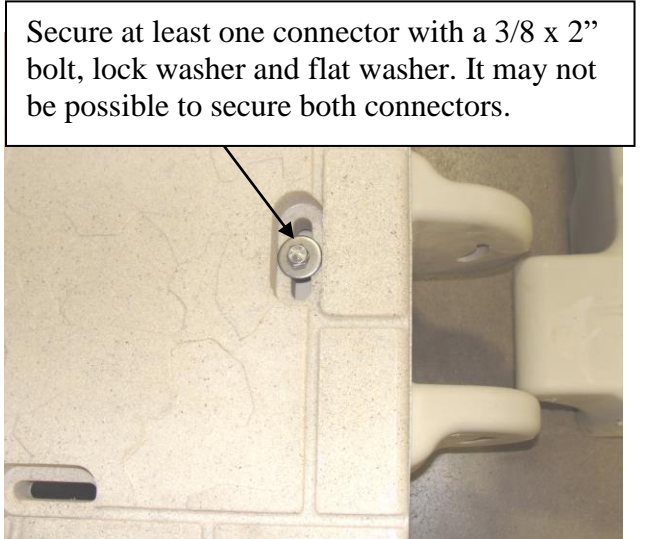
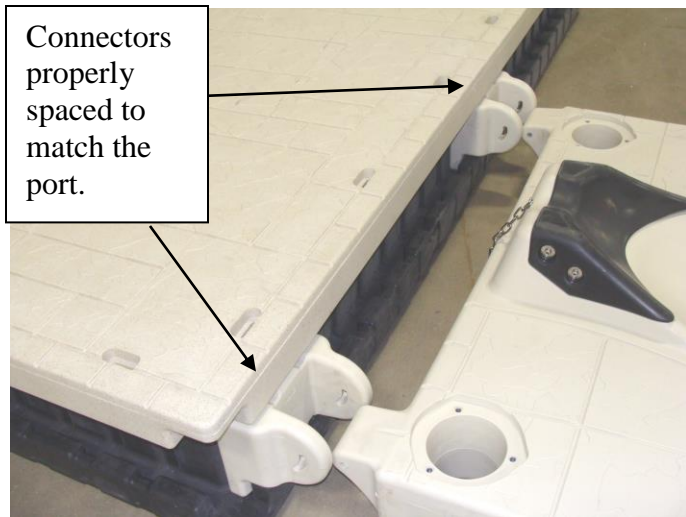
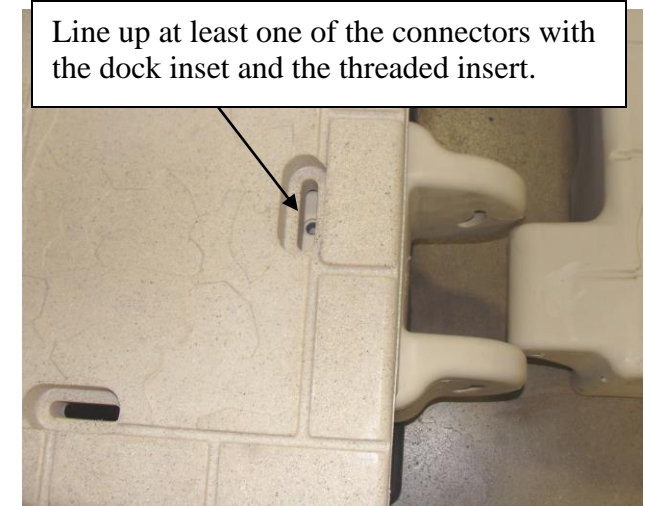
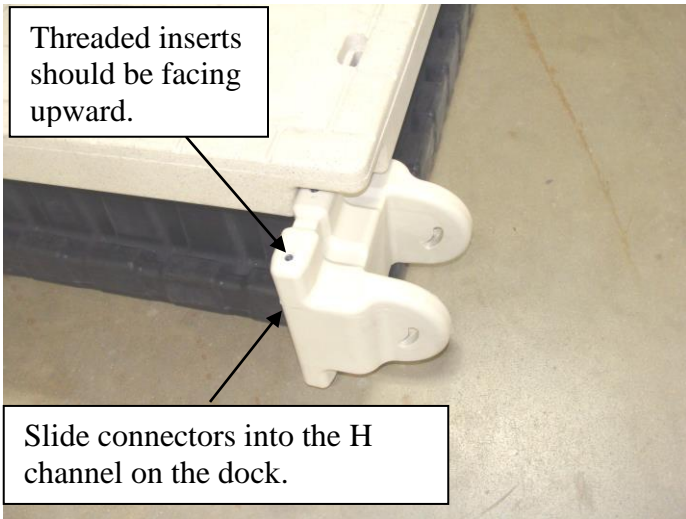


2. Insert top connection piece into post hole and secure to bottom connection using the 3/8 x 2 bolts, lock washers and flat washers in three locations. Lock washers will be on top of the flat washers. Repeat on the other side.



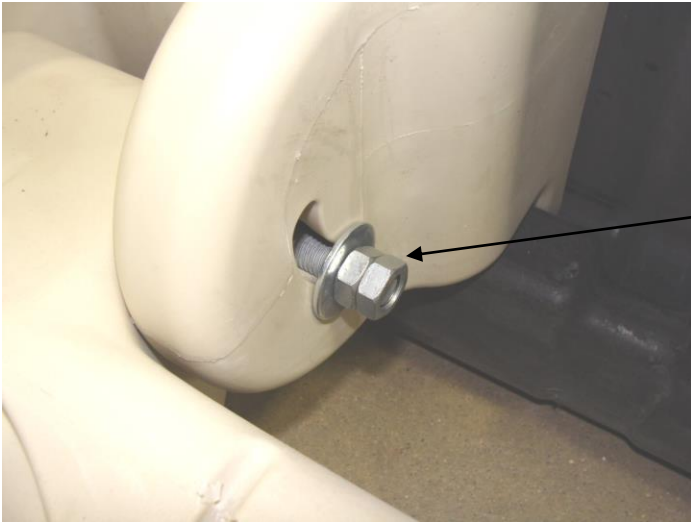
Secure top piece in three places with the 3/8 x 2" bolts, lock washers and flat washers.

3. Slide the two plastic dock connectors into the Wave Armor dock H channel. Make sure the threaded inserts are facing upward. Space the connectors so they will line up with the connection points on the front of the port.

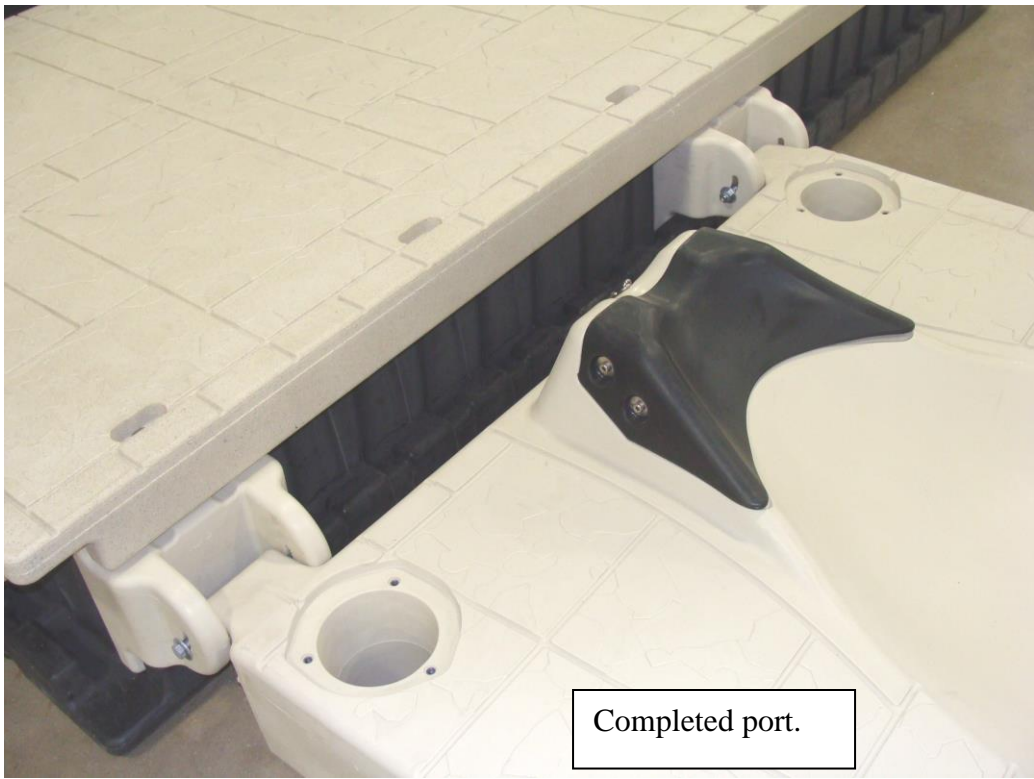


EVO Port shown here. SIX Port installation is the same.





Tighten the two jam nuts securely against each other so they do not come loose. Loctite may also be used but is not required. The 1/2 x 9 1/2" bolt should remain slightly loose so it is free to move in the slot.



Completed port.