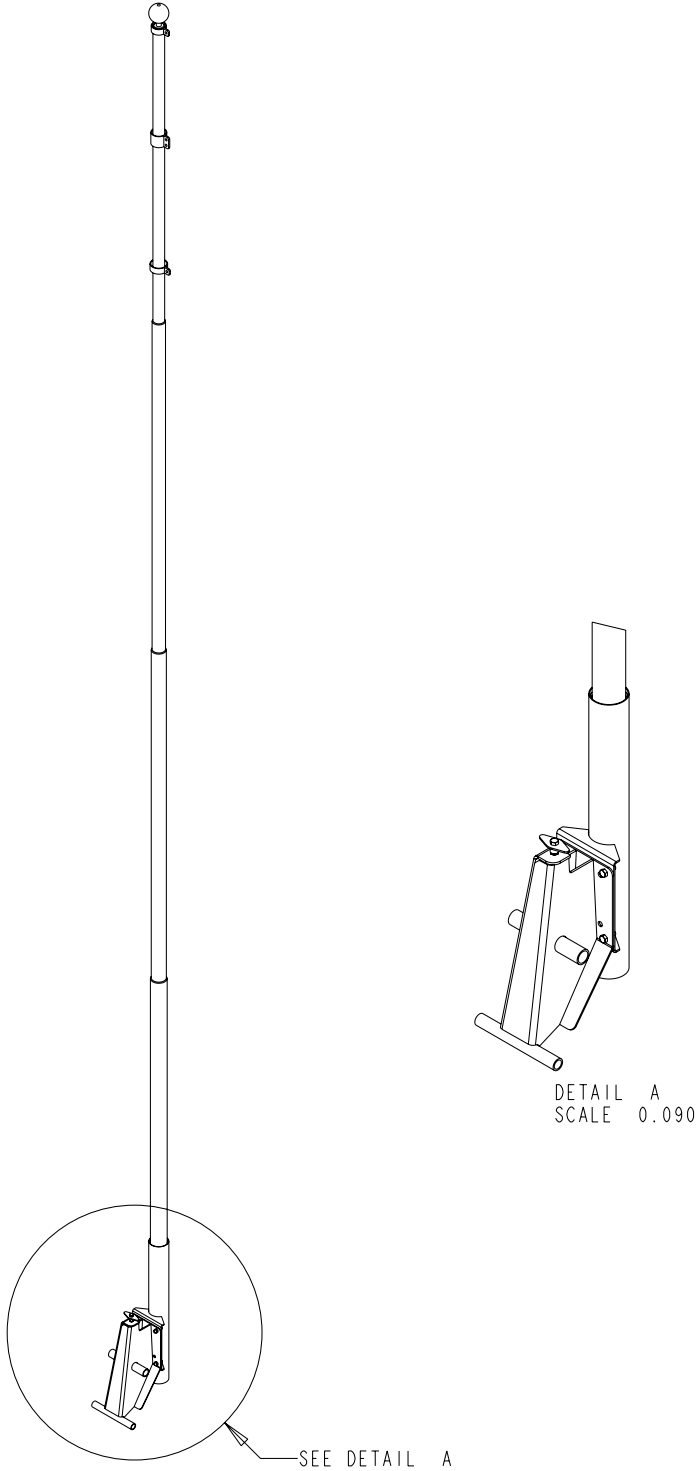


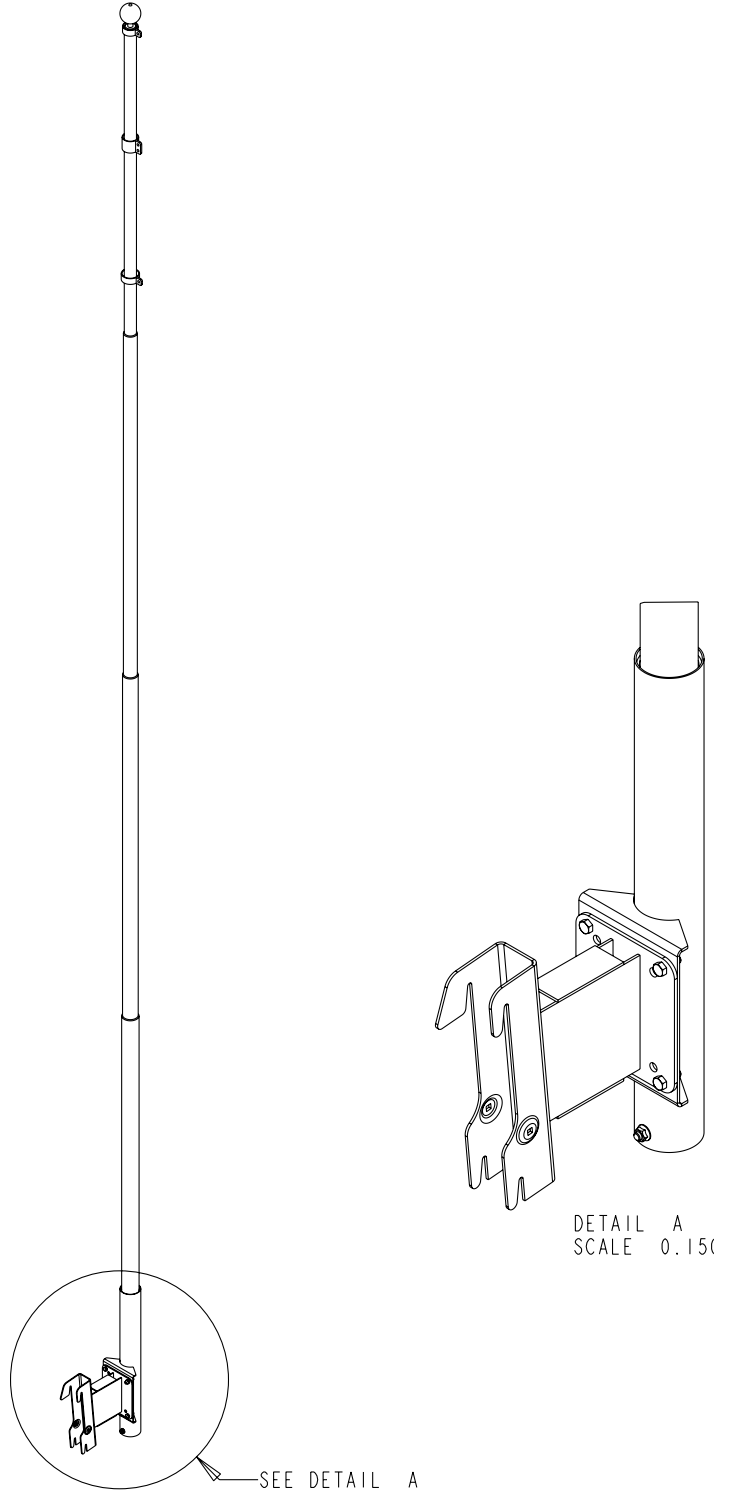
DA0042

Dock Flag Pole for Floating Dock



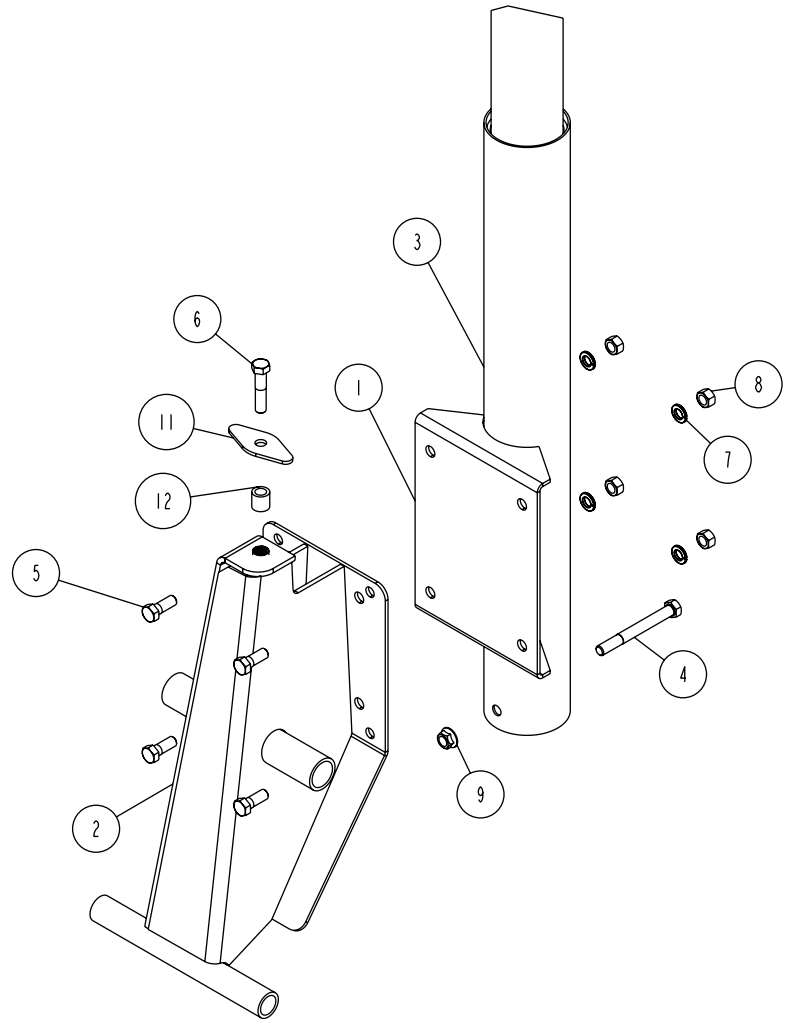
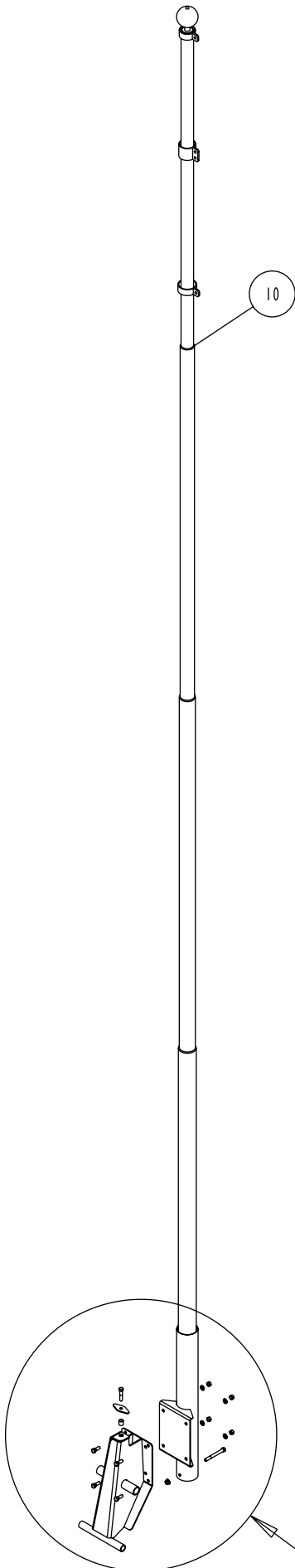
DA0043

Dock Flag Pole for Stationary Dock



DA0042 Dock Flag Pole for Floating Dock

DETAIL B
SCALE 0.150

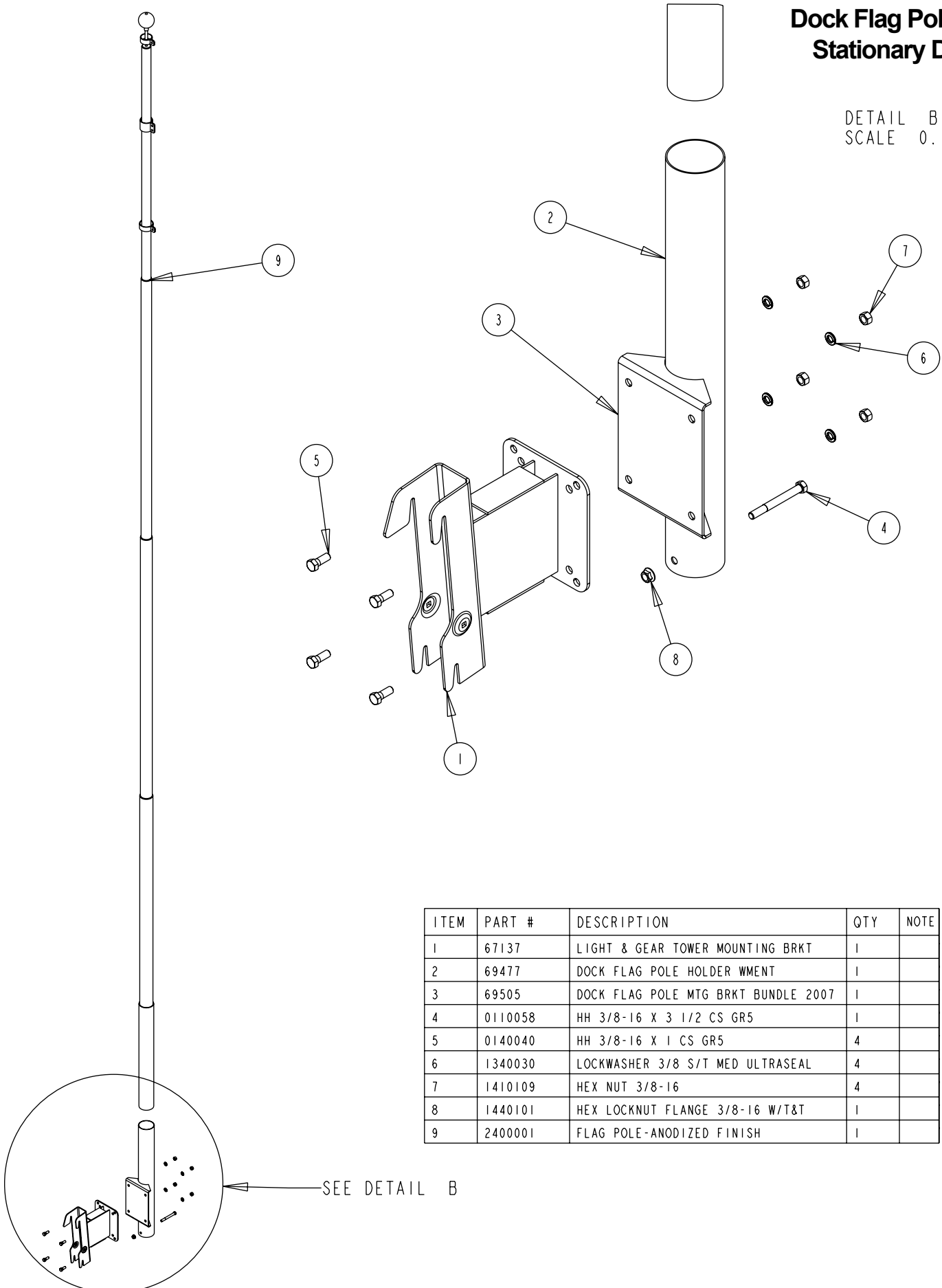


ITEM	PART #	DESCRIPTION	QTY	NOTE
1	69477	DOCK FLAG POLE HOLDER WMENT	1	
2	69479	FLOATING DOCK CONNECTOR WMENT	1	
3	69505	DOCK FLAG POLE MTG BRKT BUNDLE 2007	1	
4	0110058	HH 3/8-16 X 3 1/2 CS GR5	1	
5	0140040	HH 3/8-16 X 1 CS GR5	4	
6	0150048	HH 3/8-16 X 2 CS STAINLESS	1	
7	1340030	LOCKWASHER 3/8 S/T MED ULTRASEAL	4	
8	1410109	HEX NUT 3/8-16	4	
9	1440101	HEX LOCKNUT FLANGE 3/8-16 W/T&T	1	
10	2400001	FLAG POLE-ANODIZED FINISH	1	
11	3610165	WASHER DIAMOND 1 1/4 X 3 SS	1	
12	3610166	BUSHING ALUM 5/80D X 13/32 ID X 5/8	1	

SEE DETAIL B

DA0043 Dock Flag Pole for Stationary Dock

DETAIL B
SCALE 0.150



ITEM	PART #	DESCRIPTION	QTY	NOTE
1	67137	LIGHT & GEAR TOWER MOUNTING BRKT	1	
2	69477	DOCK FLAG POLE HOLDER WMENT	1	
3	69505	DOCK FLAG POLE MTG BRKT BUNDLE 2007	1	
4	0110058	HH 3/8-16 X 3 1/2 CS GR5	1	
5	0140040	HH 3/8-16 X 1 CS GR5	4	
6	1340030	LOCKWASHER 3/8 S/T MED ULTRASEAL	4	
7	1410109	HEX NUT 3/8-16	4	
8	1440101	HEX LOCKNUT FLANGE 3/8-16 W/T&T	1	
9	2400001	FLAG POLE-ANODIZED FINISH	1	

ASSEMBLY OF THE FLOATING DOCK FLAG POLE BASE

- Align the holes in the flag pole holder weldment with the holes in the floating dock connector weldment.
- Attach the weldments together using four (4) 3/8" x 1" hex bolts and hex flange lock nuts. Tighten.

Floating Dock System

- Remove the mounting bolt assembly from the top of the floating dock connector weldment.
- Position the assembly to the desired location on the side of the floating dock.
- Raise the assembly up so the floating dock connector weldment slides into the pocket molded into the side of the floating dock section.
- Secure in place using the bolt assembly just removed from the floating dock connector weldment.
- Drop the bolt assembly into the hole provided in the dock decking and thread into the mounting bracket. Tighten to secure into position.
- Insert the base of the flag pole into the plastic spacer tube supplied.
- Insert this assembly into the top of the flag pole holder weldment. The plastic spacer tube is to be installed between the flag pole and the flag pole holder weldment.
- Installation is complete.

ASSEMBLY OF THE STATIONARY DOCK FLAG POLE BASE

- Align the holes in the flag pole holder weldment with the holes in the dock accessory mounting bracket.
- Attach the weldments together using four (4) 3/8" x 1" hex bolts and hex flange lock nuts. Tighten.

The flag pole base can now be attached to the leg frame.

- Each stationary dock leg frame has a set of four ears on which the dock accessory mounting bracket will attach.
- Simply raise the accessory mounting bracket to the top of the dock leg so the dock accessory mounting bracket can then be slipped onto the dock leg above the ears.
- When the dock accessory mounting bracket is completely on the dock leg, slide it down the leg over the ears. Let them interlock securing the dock accessory mounting bracket to the leg.
- Insert the base of the flag pole into the plastic spacer tube supplied.
- Insert this assembly into the flag pole holder weldment. The plastic spacer tube is to be installed between the flag pole and the tube of the flag pole holder weldment.
- Installation is complete.